

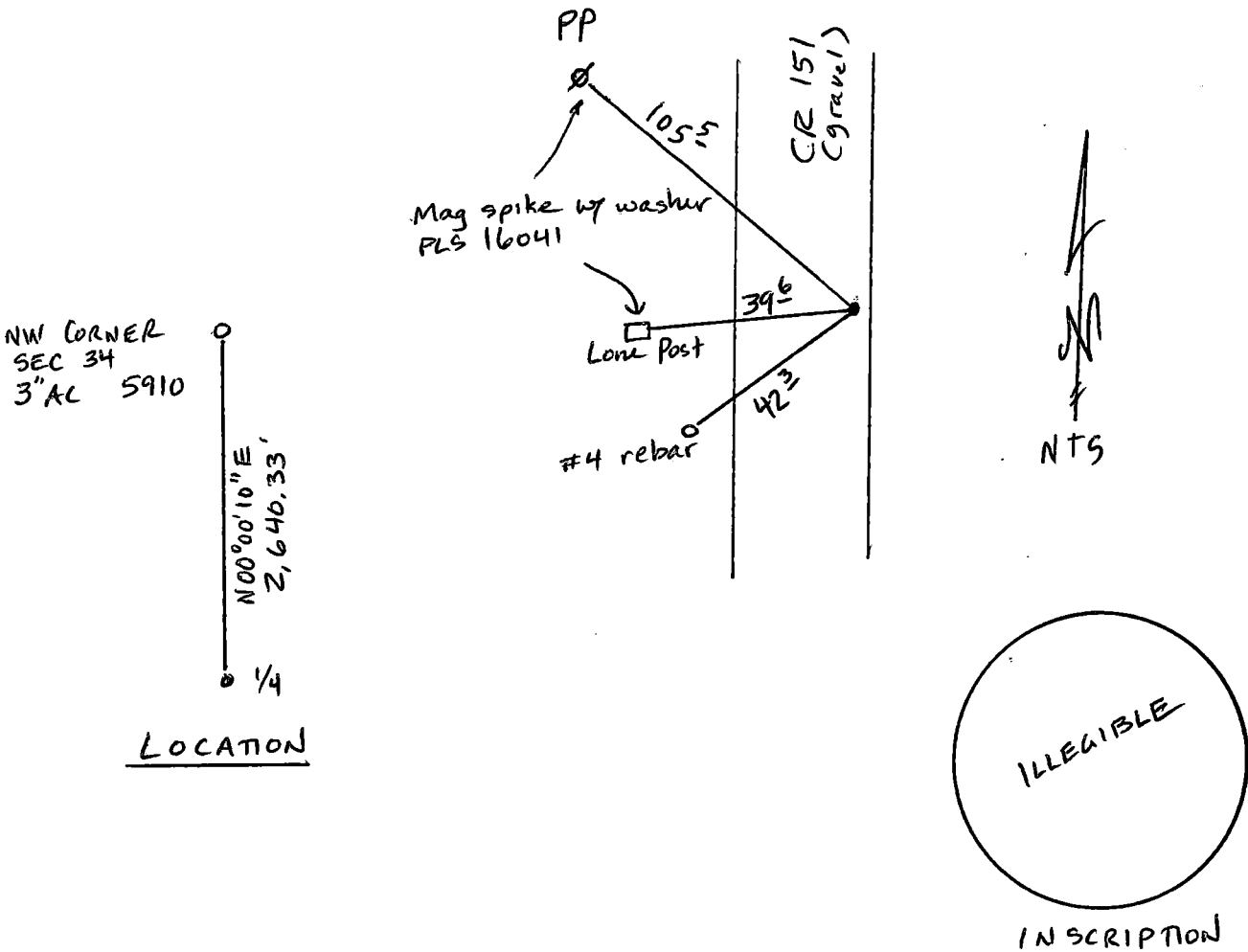
# State of Wyoming Corner Record

(In compliance with the *CORNER PERPETUATION AND FILING ACT*, Wyoming Statutes, 1997, Section 33-29-140, et seq., and the Rules and Regulations of the Board of Registration for Professional Engineers and Professional Land Surveyors)

Reverse side of this form may be used if more space is needed.

Record of original survey and citation of source of historical information (if corner is lost or obliterated). Description of corner monumentation evidence found and/or monument and accessories established to perpetuate the location of this corner. Sketch of relative location of monument, accessories, and reference points with course and distance to adjacent corner(s) (if determined in this survey). Method and rationale for reestablishment of lost or obliterated corner.

Found illegible 2 1/2" Aluminum Cap on #5 rebar



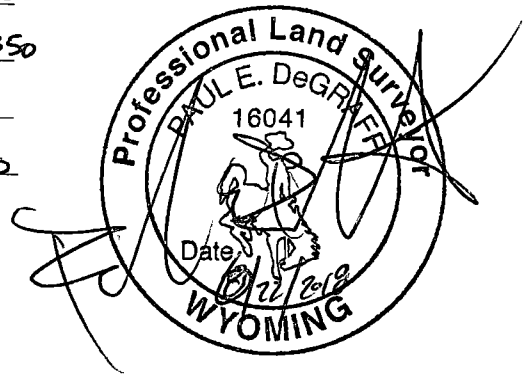
Date of Field Work: 6-6-18 Office Reference: #61499

### CROSS INDEX DIAGRAM

	1	2	3	4	5	6	7	8	9	10	11	12	13	14	15	16	17	18	19	20	21	22	23	24	25	
A																										
B																										
C		6		5		4		3		2		1														
D																										
E																										
F																										
G		7		8		9		10		11		12														
H																										
J																										
K																										
L		18		17		16		15		14		13														
M																										
N																										
O																										
P		19		20		21		22		23		24														
Q																										
R																										
S																										
T		30		29		28		27		26		25														
U																										
V																										
W																										
X		31		32		33		34		35		36														
Y																										
Z																										

Land Surveyor / Firm / Address  
Paul E. DeGraff  
Encompass Energy Services  
350 Interlocken Blvd., #350  
Broomfield, CO 80021  
 Telephone: (303) 955-6080

This corner record was prepared by me or under my direction and supervision.  
 SEAL & SIGNATURE



Corner Name: ~~1/4 S.34~~ 1/4 S.34 Section: 34 T 13N R 62W 6TH P.M. Cross-Index No.: ~~13X~~ 13X  
 SBRPEPLS/PLSW: March 1994; PLSW January 1998